

# THE SHOREBREEZE | NORTH QLD



**FreshHomes**  
BUILT NEW JUST FOR YOU

HOUSE ONLY  
PRICE FROM

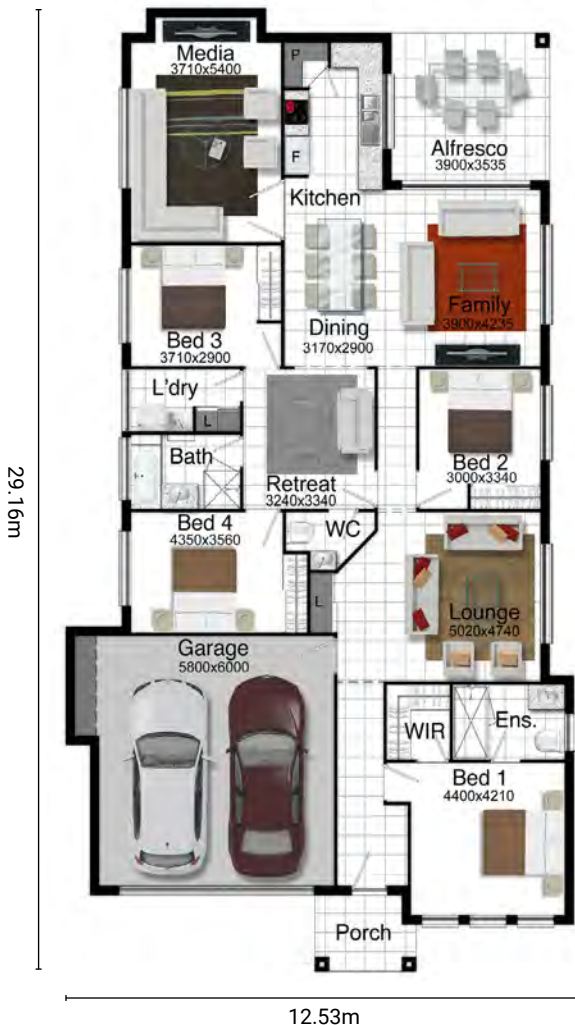
**\$357,405**

4

2

2

Living Area	179.5m <sup>2</sup>
Garage Area	39.3m <sup>2</sup>
Alfresco Area	13.7m <sup>2</sup>
Porch Area	4.3m <sup>2</sup>
<b>Total Area</b>	<b>236.8m<sup>2</sup></b>



## PACKAGE INCLUDES:

- 25 Years structural guarantee\*
- Subject to covenant approval
- Panasonic split system air-conditioning
- 1.2m wide timber and glass entry door
- 2.7m high ceilings
- Security screens
- Window locks
- Custom made kitchen by MODULINE
- Elegant stone bench tops to kitchen
- TECHNIKA cooking appliances with 5 years warranty
- Superior tiles and carpet
- Tiles to porch and alfresco
- Luxury designer tapware
- Smooth render
- NBN connection
- SOLAR ready
- TV Antenna
- Stone aggregate driveway
- Letterbox
- Wall mount clothesline
- Facade shown not included



**FreshHomes**  
BUILT NEW JUST FOR YOU

Brisbane | Ipswich | Gold Coast | Sunshine Coast | Townsville

[freshhomes.com.au](http://freshhomes.com.au)

Plan and images are for illustration only. All elevations are masonry block with painted architectural textured coating. Brick finishes apply to SEQ only. Floor plan and elevation as shown in this brochure are artists impressions only and do not form any part of the contract to build. Standard plans and specifications take precedence over any design, elevation or brochure. These designs are exclusively the property of Fresh Homes and as such as copyright. QBCC1088603. Prices may change without notice. \*Applies to building structure only.