

# THE PILBARA | NORTH QLD



**FreshHomes**  
BUILT NEW JUST FOR YOU

HOUSE ONLY  
PRICE FROM

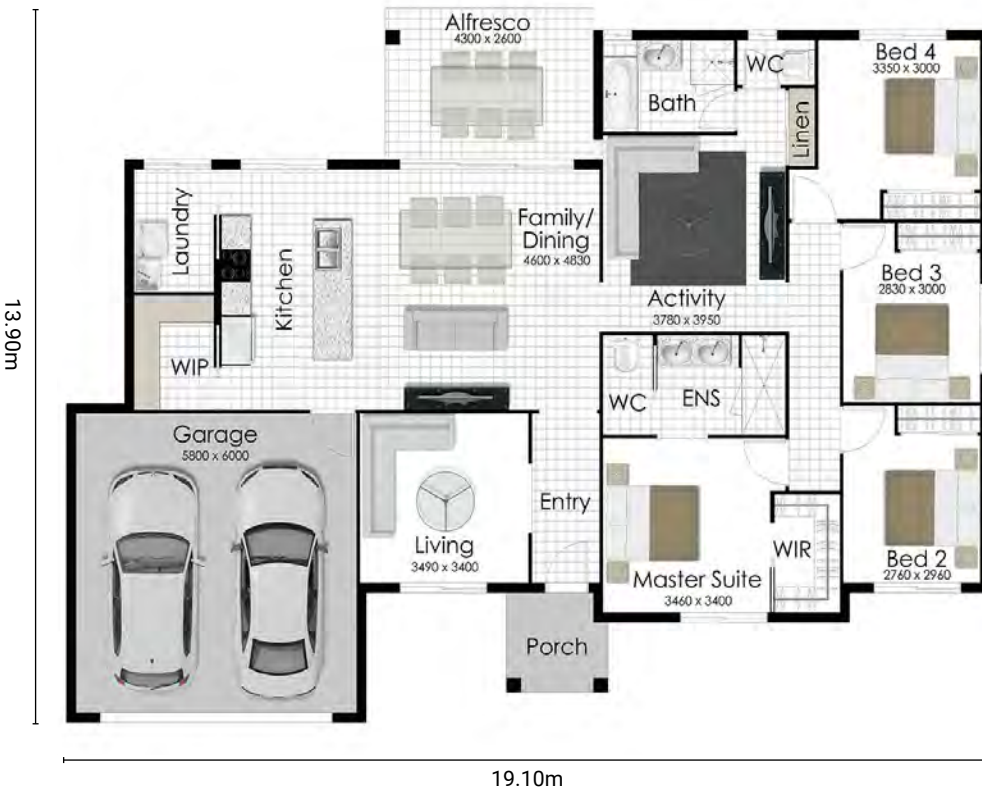
**\$360,966**

4+

2

2

Living Area	163.0m <sup>2</sup>
Garage Area	38.0m <sup>2</sup>
Alfresco Area	13.1m <sup>2</sup>
Porch Area	4.0m <sup>2</sup>
<b>Total Area</b>	<b>218.00m<sup>2</sup></b>



## PACKAGE INCLUDES:

- 25 Years structural guarantee\*
- Split system air-conditioning
- SOLAR ready
- 7 star plus energy efficiency
- C2 wind ratings
- R2.5 ceiling insulation
- Ventilated eaves
- Superior tiles and quality carpet
- Luxury tap ware
- Stunning stone bench tops to kitchen
- Walk-in pantry
- Tiles to porch
- Colorbond roof, gutters and fascia
- 75m<sup>2</sup> stone aggregate driveway
- Rendered letterbox
- Wall mount clothesline
- Smooth render
- NBN connection
- Heat pump HWS
- LED downlights
- Facade shown not included



**FreshHomes**  
BUILT NEW JUST FOR YOU

Brisbane | Ipswich | Gold Coast | Sunshine Coast | Townsville

[freshhomes.com.au](http://freshhomes.com.au)

Plan and images are for illustration only. All elevations are masonry block with painted architectural textured coating. Brick finishes apply to SEQ only. Floor plan and elevation as shown in this brochure are artists impressions only and do not form any part of the contract to build. Standard plans and specifications take precedence over any design, elevation or brochure. These designs are exclusively the property of Fresh Homes and as such as copyright. QBCC1088603. Prices may change without notice. \*Applies to building structure only.