

# THE PILBARA 282 | NORTH QLD



**FreshHomes**  
BUILT NEW JUST FOR YOU

HOUSE ONLY  
PRICE FROM

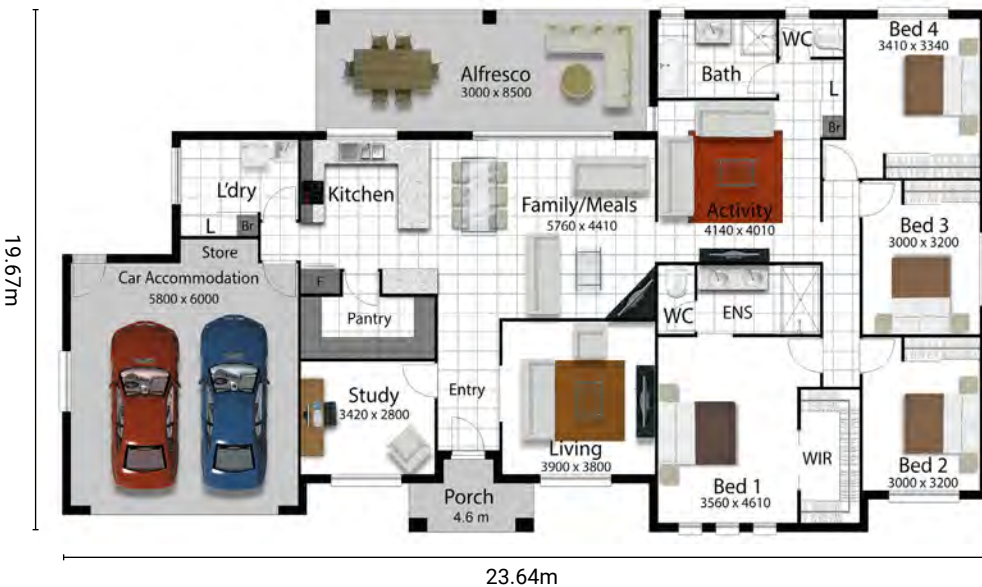
**\$427,156**

4+

2

2

Living Area	196.5m <sup>2</sup>
Garage Area	39.4m <sup>2</sup>
Alfresco Area	25.2m <sup>2</sup>
Porch Area	4.6m <sup>2</sup>
<b>Total Area</b>	<b>265.7m<sup>2</sup></b>



## PACKAGE INCLUDES:

- 25 Years structural guarantee\*
- Persona Specification
- 1.2m wide entry door
- 2.7m high ceilings
- Panasonic split system air-conditioning with 5 years warranty
- Ventilated eaves and ceiling insulation
- Security screens and key window locks
- Custom made kitchen by MODULINE
- Stunning stone bench tops to kitchen
- TECHNIKA quality cooking appliances with 5 years warranty
- Superior tiles to porch, entry, family, meals, kitchen, activity and wet areas
- Carpet to study, living and media, all bedrooms and robes
- Luxury tapware
- Steel internal frames
- Three point termite protection
- 65m<sup>2</sup> stone aggregate driveway
- Rendered letterbox
- Wall mount clothesline
- SOLAR Ready and NBN Connection
- TV Antenna and LED downlights
- Heat pump HWS



**FreshHomes**  
BUILT NEW JUST FOR YOU

Brisbane | Ipswich | Gold Coast | Sunshine Coast | Townsville

[freshhomes.com.au](http://freshhomes.com.au)

Plan and images are for illustration only. All elevations are masonry block with painted architectural textured coating. Brick finishes apply to SEQ only. Floor plan and elevation as shown in this brochure are artists impressions only and do not form any part of the contract to build. Standard plans and specifications take precedence over any design, elevation or brochure. These designs are exclusively the property of Fresh Homes and as such as copyright. QBCC1088603. Prices may change without notice. \*Applies to building structure only.