

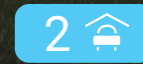
# THE MAYFAIR LIFESTYLE | NORTH QLD



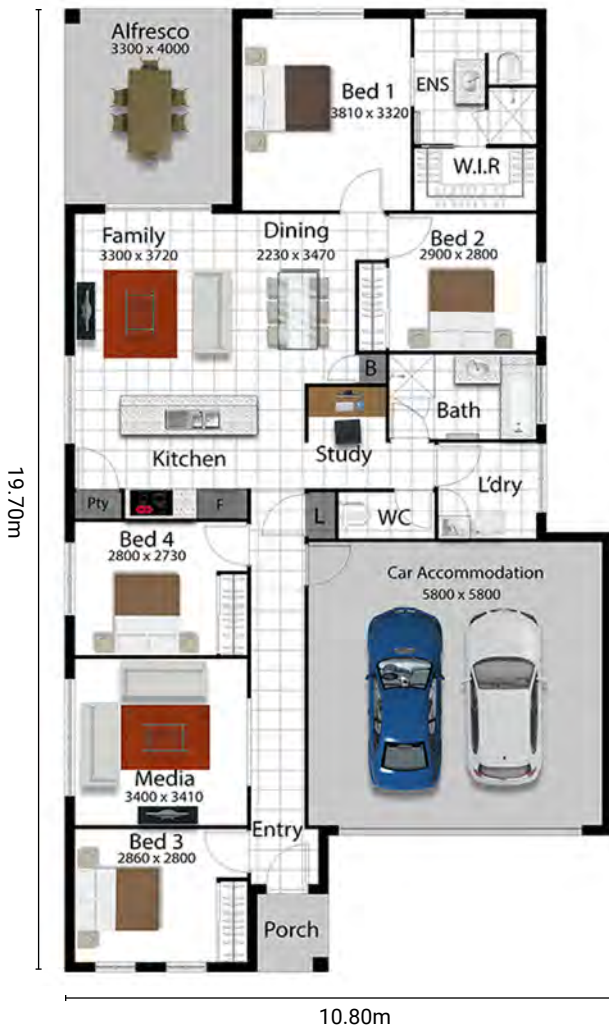
**FreshHomes**  
BUILT NEW JUST FOR YOU

HOUSE ONLY  
PRICE FROM

**\$295,900**



Living Area	133.21m <sup>2</sup>
Garage Area	36.20m <sup>2</sup>
Alfresco Area	12.96m <sup>2</sup>
Porch Area	2.24m <sup>2</sup>
<b>Total Area</b>	<b>184.61m<sup>2</sup></b>



## PACKAGE INCLUDES:

- 25 Years structural guarantee\*
- Lifestyle specification
- Air-conditioning throughout
- Security screens to windows and sliding glass doors
- Key window locks
- CUSTOM made kitchen by MODULINE
- Stunning stone bench tops to kitchen
- 900mm wide S/S and glass range hood
- TECHNIKA quality cooking appliances
- Superior tiles and quality carpet
- Tiles to porch
- Magnetic door catches
- Polished edge mirrors to bathroom and ensuite
- Tiled niche to ensuite & bathroom
- NBN connection
- TV Antenna
- LED lighting
- SOLAR ready
- R2.5 Ceiling insulation and ventilated eaves
- Double remote controlled garage
- C1 wind rating
- Wall mount clothesline
- Rendered letterbox
- Stone aggregate driveway
- Facade shown not included



**FreshHomes**  
BUILT NEW JUST FOR YOU

Brisbane | Ipswich | Gold Coast | Sunshine Coast | Townsville

[freshhomes.com.au](http://freshhomes.com.au)

Plan and images are for illustration only. All elevations are masonry block with painted architectural textured coating. Brick finishes apply to SEQ only. Floor plan and elevation as shown in this brochure are artists impressions only and do not form any part of the contract to build. Standard plans and specifications take precedence over any design, elevation or brochure. These designs are exclusively the property of Fresh Homes and as such as copyright. QBCC1088603. Prices may change without notice. \*Applies to building structure only.