

# THE HAWKESBURY 268 | NORTH QLD



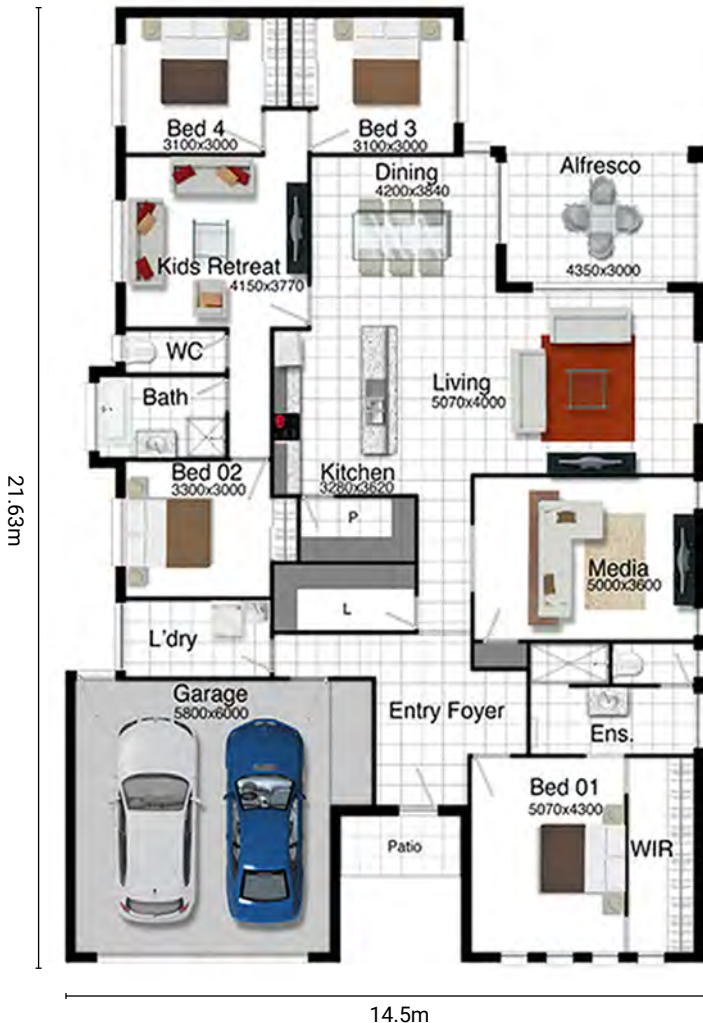
**FreshHomes**  
BUILT NEW JUST FOR YOU

HOUSE ONLY  
PRICE FROM

**\$420,303**



Living Area	209.8m <sup>2</sup>
Garage Area	41.2m <sup>2</sup>
Alfresco Area	13.5m <sup>2</sup>
Porch Area	4.1m <sup>2</sup>
<b>Total Area</b>	<b>268.6m<sup>2</sup></b>



## PACKAGE INCLUDES:

- 25 Years structural guarantee\*
- Persona specifications
- Split system air-conditioning
- 2.7m high ceilings
- 1.2m wide timber and glass entry door
- Security screens and key locks to windows
- Quality carpets
- Superior tiles
- Custom made kitchen by MODULINE
- Quality TECHNIKA appliances
- Elegant stone bench tops to kitchen
- Luxury designer tapware
- Custom made laundry cabinetry
- His and hers double vanity to ensuite
- Colorbond roof, gutters and fascia
- SOLAR ready
- NBN connection
- LED down lights
- Ventilated eaves
- Ceiling insulation
- Wall mount clothesline
- Rendered letterbox
- Stone aggregate driveway
- Smooth render
- C1 wind rating
- 3 point termite protection



**FreshHomes**  
BUILT NEW JUST FOR YOU

Brisbane | Ipswich | Gold Coast | Sunshine Coast | Townsville

[freshhomes.com.au](http://freshhomes.com.au)

Plan and images are for illustration only. All elevations are masonry block with painted architectural textured coating. Brick finishes apply to SEQ only. Floor plan and elevation as shown in this brochure are artists impressions only and do not form any part of the contract to build. Standard plans and specifications take precedence over any design, elevation or brochure. These designs are exclusively the property of Fresh Homes and as such as copyright. QBCC1088603. Prices may change without notice. \*Applies to building structure only.