

THE EDEN | NORTH QLD



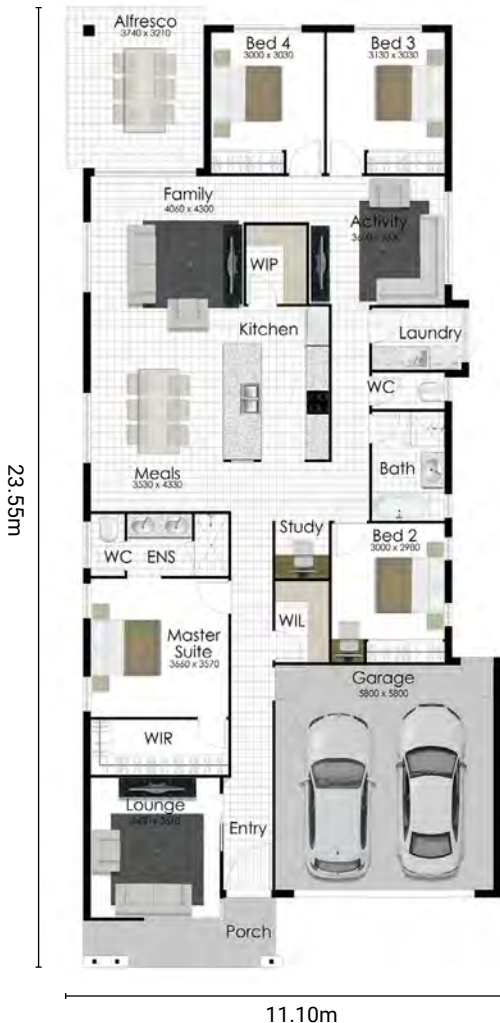
FreshHomes
BUILT NEW JUST FOR YOU

HOUSE ONLY
PRICE FROM

\$378,121



Living Area	183.27m ²
Garage Area	37.03m ²
Alfresco Area	11.85m ²
Porch Area	7.41m ²
Total Area	239.54m²



PACKAGE INCLUDES:

- 25 Years structural guarantee*
- Persona specification
- Three Point termite protection
- Split system air-conditioning throughout
- 1.2m wide feature timber entry door
- Security screens and window key locks
- CUSTOM made kitchen by MODULINE
- TECHNIKA quality cooking appliances
- Pre-made vanities to bathroom and ensuite
- Luxury 5 star tap ware
- Superior tiles and quality carpet
- NBN connection
- SOLAR ready
- LED down lights
- TV connection
- Smooth render
- Ceiling insulation and ventilated eaves
- Double auto remote control garage door
- Three point termite protection
- Wall mount clothesline
- Rendered letterbox
- Stone aggregate driveway
- C1 wind rating
- Facade shown not included



FreshHomes
BUILT NEW JUST FOR YOU

Brisbane | Ipswich | Gold Coast | Sunshine Coast | Townsville

freshhomes.com.au

Plan and images are for illustration only. All elevations are masonry block with painted architectural textured coating. Brick finishes apply to SEQ only. Floor plan and elevation as shown in this brochure are artists impressions only and do not form any part of the contract to build. Standard plans and specifications take precedence over any design, elevation or brochure. These designs are exclusively the property of Fresh Homes and as such as copyright. QBCC1088603. Prices may change without notice. *Applies to building structure only.